

# 4<sup>th</sup> PCNS – Travel Guide

11-14<sup>th</sup> September 2023, Sønderborg, Denmark

Ver1

## Venue Location

The next 4th edition of the PCNS Passive Components Networking Days Symposium will take place at SDU campus in Sønderborg, [Alsion](#).

Besides being the address of the University of Southern Denmark, Alsion also houses a research park, a business academy, a concert hall and the symphony orchestra of Southern Jutland. This provides unique possibilities for extending the co-operation between university, business life and culture.

Free parking is available by the main entrance at SDU Sønderborg.

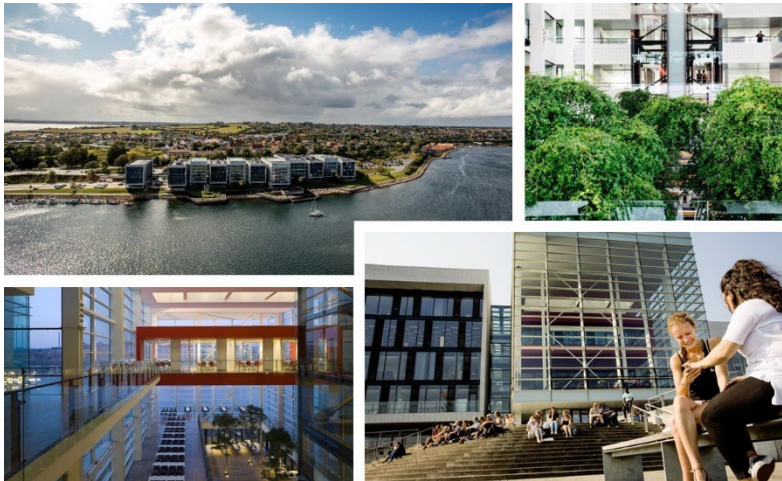
## SDU Campus Alsion

Alsion 2

ZIP 6400

Sønderborg

Denmark



Please find driving directions via Google Maps below:

<https://www.google.dk/maps/place/Alsion+2,+6400+S%C3%B8nderborg/@54.9127992,9.777194,17z/data=!3m1!4b1!4m6!3m5!1s0x47b3390d5b445a61:0xcf78885b03cdc2bf!8m2!3d54.9127961!4d9.779388!16s%2Fg%2F11pdvxhjbz>

Notes:

1. Welcome Drink on September 12th will take place in the main SDU building
2. Gala Dinner on September 13th is organized outside of SDU. Attendees are requested to meet in front of the SDU reception after the sessions. Travel via bus/coach will take attendees to the event location and back to Sønderborg center and hotels.

## HOW TO GET THERE



### **Sonderborg, easy to get to - easy to love**

- From Copenhagen Airport you can either take a direct train from the central station or a direct flight (35 minutes) to Sonderborg.
- From Billund Airport you can take a short bus ride and switch to the direct train to Sonderborg Station in either Vejle or Kolding.
- Hamburg Airport offers a useful alternative. From here you can move on by train to Flensburg and change to the bus to Sonderborg.
- Sonderborg is directly connected with the Danish and European highway network facilitating travel by car.

#### **By car**

Sonderborg is directly connected with the Danish and European highway network (E45) facilitating travel by car.

Car rental is available at all airports, including Sonderborg.

#### **By train**

There are direct connections to Sonderborg, see [www.dsb.dk](http://www.dsb.dk) or [www.rejseplanen.dk](http://www.rejseplanen.dk) (german and english versions), among others there is a direct train from the central station in Copenhagen.

Trains from Germany run every 30 minutes via Hamburg, Kiel or Flensburg/Padborg, see [www.bahn.de](http://www.bahn.de)

#### **By plane**

**From Copenhagen:** you can take a direct flight from Copenhagen/Kastrup (CPG) to Sonderborg (SGD)

- flight time only 35 minutes. Departures 5 times a day on work days, see [Alsie Express](#).

From **Billund Airport** busses and trains run with an interval of 30-60 minutes from the airport to Sonderborg

via Vejle Station or Kolding. [www.rejseplanen.dk](http://www.rejseplanen.dk)

From **Hamburg Airport** you can move on by train to Flensburg and change to the bus to Sonderborg.

By bus - For long distance coaches, see [www.flixbus.dk](http://www.flixbus.dk) or [www.flixbus.de](http://www.flixbus.de)

By sea - From **Oslo**, there are ferry services to Kiel/Germany, 1,5 hours' drive away.

### **Taxi in Sønderborg:**

- Dantaxi, Sønderborg, +45 74 42 18 18 (read more about the price [here](#)).
- 4x27, Sønderborg, +45 27 27 27 27
- Juhls Taxi, Sønderborg, +45 30 42 18 18



## **ACCOMODATION**

Check the hotel suggestions below and book your conference accommodation well in advance to secure the best available rates. The special offer at an eligible rate is available only to the delegates registered for the PCNS Passive Components Networking Days Symposium.

**Please note that you have to make the reservation yourself and payment will take place upon arrival, directly to the hotel.**

**Please note:** Despite PCNS organizers best effort we could not get pre-booking of larger amount of rooms in one hotel. Nevertheless, there may be one or two rooms available in smaller hotels nearby. On return from Gala Dinner bus coach will make a stop close to hotels and SDU facility.

### **[Alsik Hotel & SPA](#)**

The beautiful hotel Alsik is one of the biggest, most fascinating hotels in Denmark. Its hallmarks are tasteful Nordic design and natural materials, and the hotel is part of renowned architect Frank Gehry's master plan for the Sønderborg waterfront. The inviting, ultra-modern rooms and suites have views of both the town of Sønderborg and one of the loveliest fjord landscapes in Denmark.

**Price:** Single room – 1117,5 DKK per night, incl. breakfast, inclusive of VAT (894 DKK excl. VAT)  
Please refer to the booking code that you received during PCNS registration when making reservation: "xxxxxx".

Book your stay [here](#) or contact: [info.alsik@steigenberger.com](mailto:info.alsik@steigenberger.com) or +45 74 20 30 00.



### [Hotel Sønderborg Strand](#)

Hotel Sønderborg Strand looks directly onto the beach, in a beautiful natural location of historical interest, just 250 metres from Sønderborg town centre. The view over Flensborg Fjord and Allsund can be seen from the hotel. The beautiful castle of Sønderborg Slot is opposite the hotel, with the marina, woodland and beautiful nature of Als all close by.

**Price:** Single room (DKK 907,- per night) inclusive of VAT. An extensive breakfast buffet is also included in the price.

Please refer to the booking code that you received during PCNS registration when making reservation: "xxxxxx".

Book your stay [here](#) or contact: [hotel@sonderborgstrand.dk](mailto:hotel@sonderborgstrand.dk) or +45 70 84 83 48.

